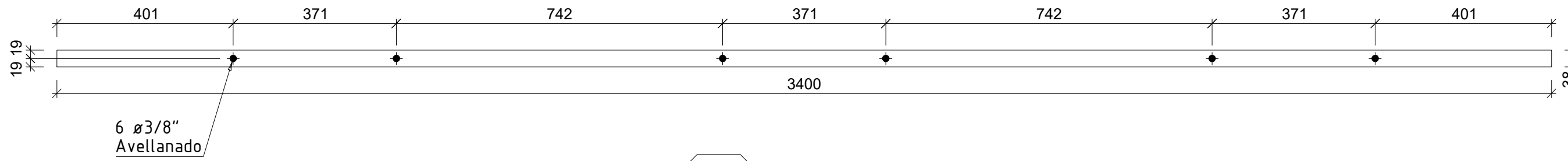
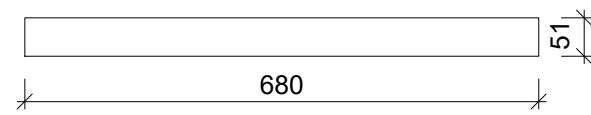


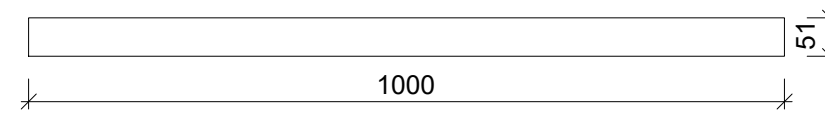
1x **30** PL 6.35x50.8x3400
Stainless Steel 304 - 1:10



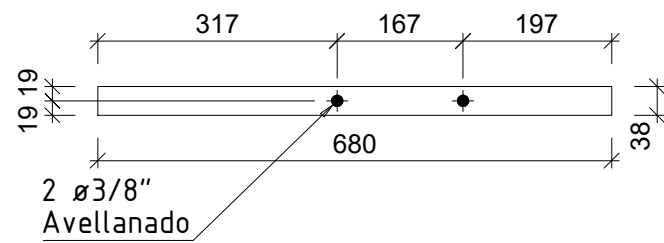
1x **26** PL 6.35x38.1x3400
Stainless Steel 304 - 1:10



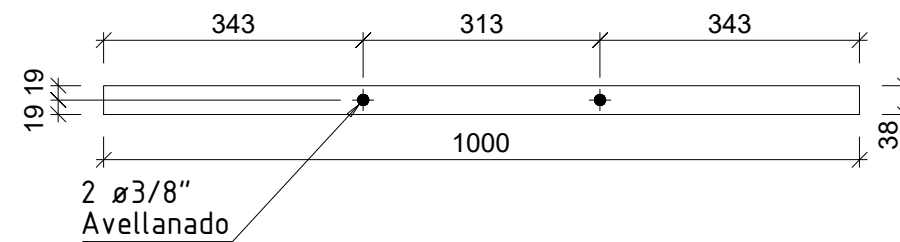
2x **24** PL 6.35x50.8x680
Stainless Steel 304 - 1:10



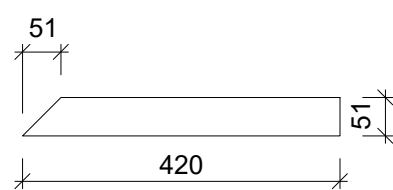
1x **29** PL 6.35x50.8x1000
Stainless Steel 304 - 1:10



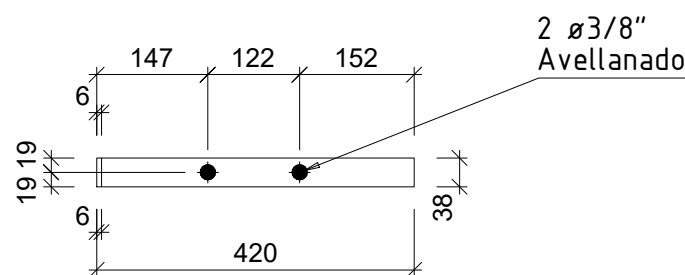
2x **23** PL 6.35x38.1x680
Stainless Steel 304 - 1:10



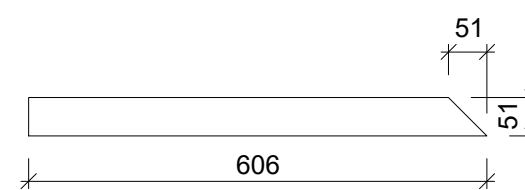
1x **25** PL 6.35x38.1x1000
Stainless Steel 304 - 1:10



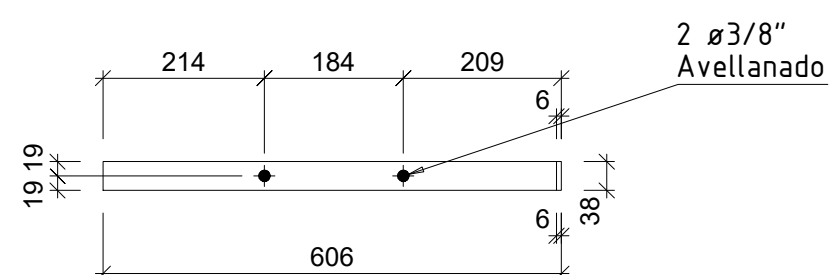
1x **31** PL 6.35x50.8x420
Stainless Steel 304 - 1:10



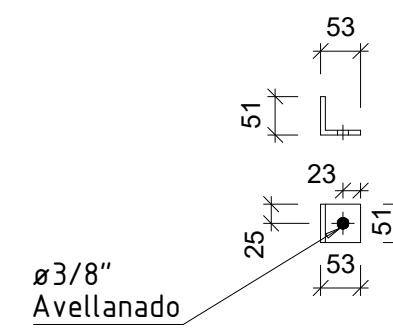
1x **27** PL 6.35x38.1x420
Stainless Steel 304 - 1:10



1x **32** PL 6.35x50.8x606.35
Stainless Steel 304 - 1:10



1x **28** PL 6.35x38.1x606.35
Stainless Steel 304 - 1:10




13x **22** PL 50.8x50.8x52.8
Stainless Steel 304 - 1:10

NOTAS :

Mark	Quantity	Description	Length	Grade	Part weight	Total weight
33	1	PipeISTD				
24	1	PL 6.35x50.8x680	680	Stainless Steel 304	1.75	1.75
23	1	PL 6.35x38.1x680	680	Stainless Steel 304	1.32	1.32
22	2	PL 50.8x50.8x52.8	50.8	Stainless Steel 304	0.67	1.34
One assembly weight:					4.41	4.41
34	1	PipeISTD				
32	1	PL 6.35x50.8x606.35	606	Stainless Steel 304	1.5	1.5
28	1	PL 6.35x38.1x606.35	606	Stainless Steel 304	1.17	1.17
31	1	PL 6.35x50.8x420	420	Stainless Steel 304	1.02	1.02
27	1	PL 6.35x38.1x420	420	Stainless Steel 304	0.81	0.81
22	3	PL 50.8x50.8x52.8	50.8	Stainless Steel 304	0.67	2.01
One assembly weight:					6.52	6.52
35	1	PipeISTD				
24	1	PL 6.35x50.8x680	680	Stainless Steel 304	1.75	1.75
23	1	PL 6.35x38.1x680	680	Stainless Steel 304	1.32	1.32
22	2	PL 50.8x50.8x52.8	50.8	Stainless Steel 304	0.67	1.34
One assembly weight:					4.41	4.41
36	1	PL 6.35x50.8x1000	1000	Stainless Steel 304	2.58	2.58
29	1	PL 6.35x38.1x1000	1000	Stainless Steel 304	1.94	1.94
25	1	PL 6.35x38.1x1000	1000	Stainless Steel 304	0.67	1.34
22	2	PL 50.8x50.8x52.8	50.8	Stainless Steel 304	0.67	1.34
One assembly weight:					5.86	5.86
37	1	PL 6.35x50.8x3400	3400	Stainless Steel 304	8.77	8.77
30	1	PL 6.35x50.8x3400	3400	Stainless Steel 304	6.58	6.58
26	1	PL 6.35x38.1x3400	3400	Stainless Steel 304	0.67	2.68
22	4	PL 50.8x50.8x52.8	50.8	Stainless Steel 304	0.67	2.68
One assembly weight:					18.04	18.04
Combined Total						39.23

REV.	Date	Description	BY
A	19/02/2026	EMITIDO PARA REVISIÓN	J.C.G



esentia
Perforaciones, Pulido y Metales

N° Proyecto OT 60029293	Título BARANDAS PARA TARIMA EN AUDITORIO SEGUNDO PISO EDIF. DE ADMINISTRACION	Codigo Doc. N/A
Planta: N/A		Area: 50
Diseñador: ESENTIA	N° de Diseñador: P1PP90-64-3-	Tipo de Documento: ESTRUCTURAL
		Especialidad: MECANICO
N° Documento de Ref. -	N° de Esentia: P1PP90-64-3-	Pagina N° 2/2
Revisión: JORGE CARAZO	Fecha: 19/02/2026	Aprobaciones: -
		Fecha: -
		Soldadura: By Manufacturer
		Grado: 304
		Revestimiento: Stainless Steel