

**SERVICIO NACIONAL DE APRENDIZAJE  
JUNIO 06 Y 07 DE 2026**

**FINCA LA SIRENITA**  
**ASPERSION CON MOTOMOCHILA**















**FINCA DEL SENA SE ENCUENTRA PERSONAL EN VARIAS ÁREAS Y DÓNDE ADMINISTRADOR PIDE INTERVENCIÓN AÚN CUANDO SE EXPLICA QUE EN ÁREAS DE ALMACENAMIENTO DE ALIMENTOS O PRESENCIA DE CAPRINOS CERDOS VACAS U OTRO TIPO DE ANIMAL NO SE PUDE INTERVENIR CON PRODUCTOS QUÍMICOS TRATANDO DE SALVAGUARDAR EL BIENESTAR DE LOS MISMOS Y DEL PERSONAL PRESENTE; AÚN ASÍ EL INSISTE EN DICHA APLICACIÓN Y SÉ PROCEDE BAJO LA RESPONSABILIDAD DEL ADMINISTRADOR**

### **DES RATIZACION**









**TECNOACADEMIA**  
**ASPERSION CON MOTOMOCHILA**









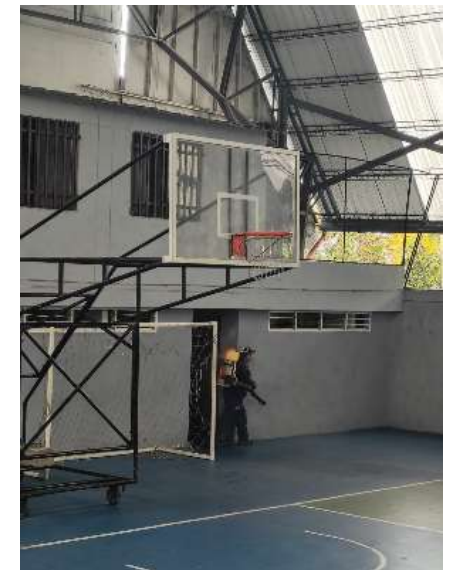
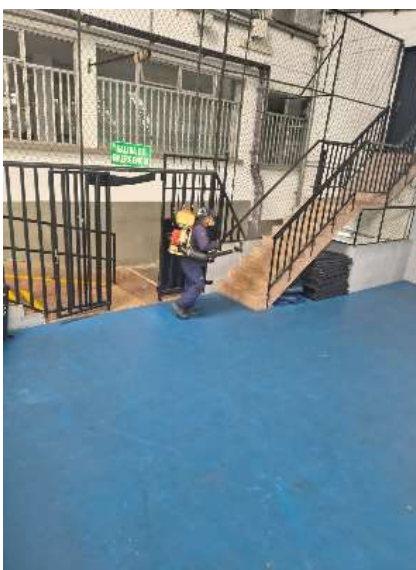


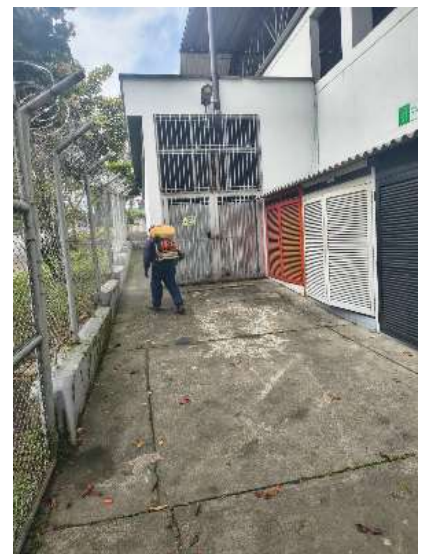
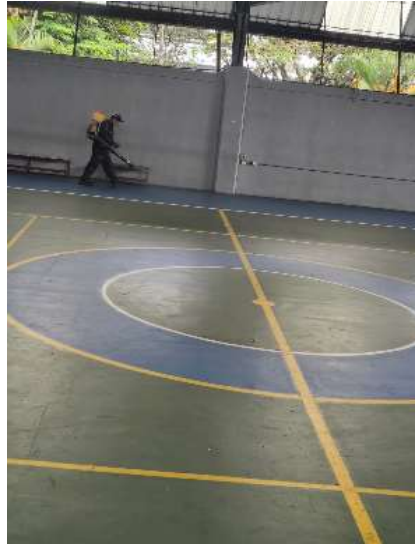


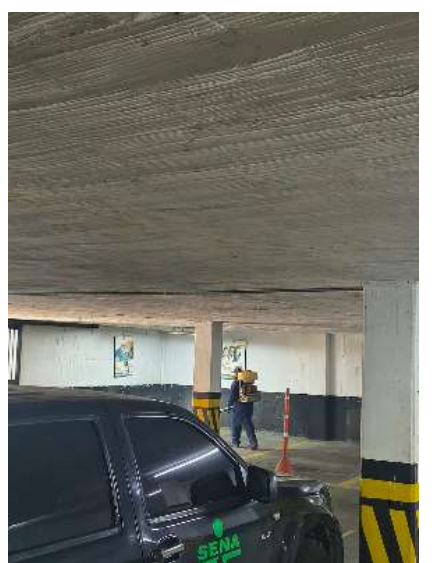
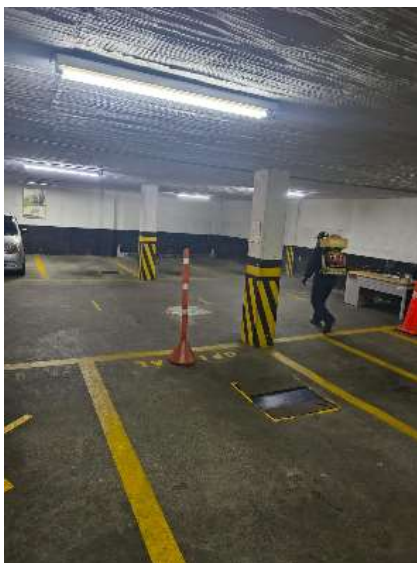
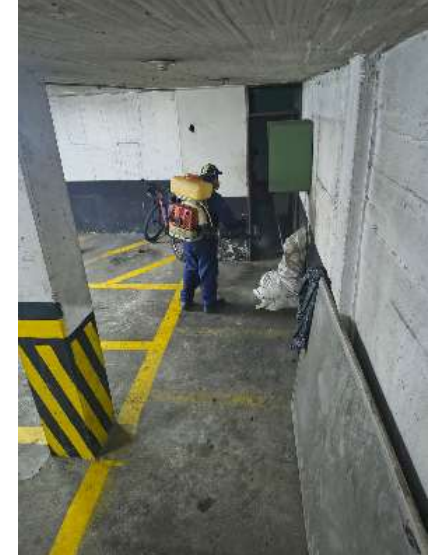
**SENA GALAN**  
**ASPERSION CON MOTOMOCHILA**

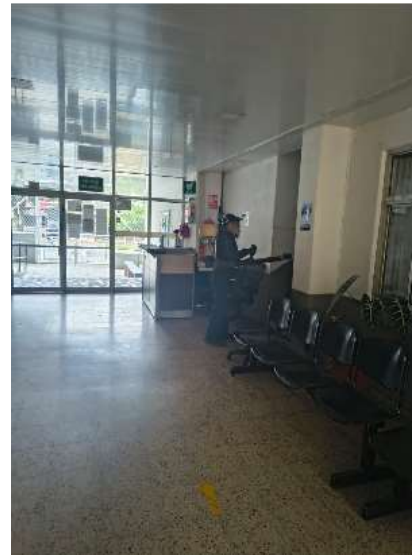
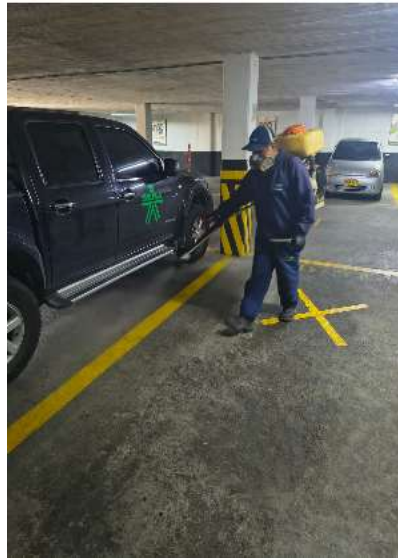


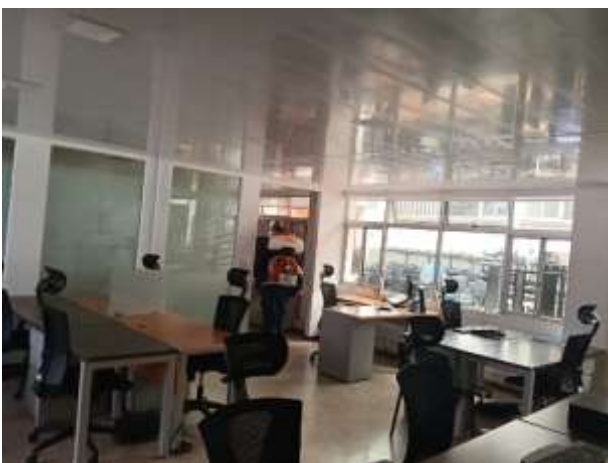
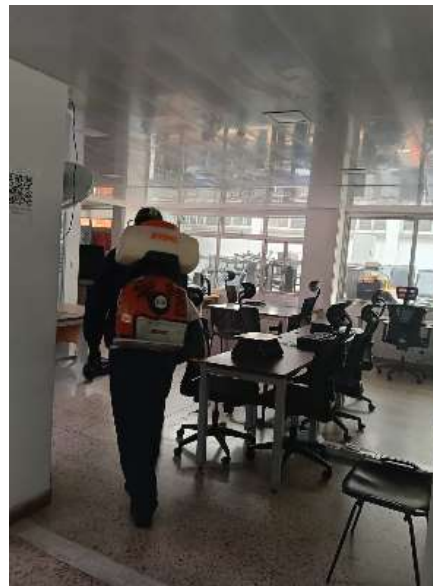




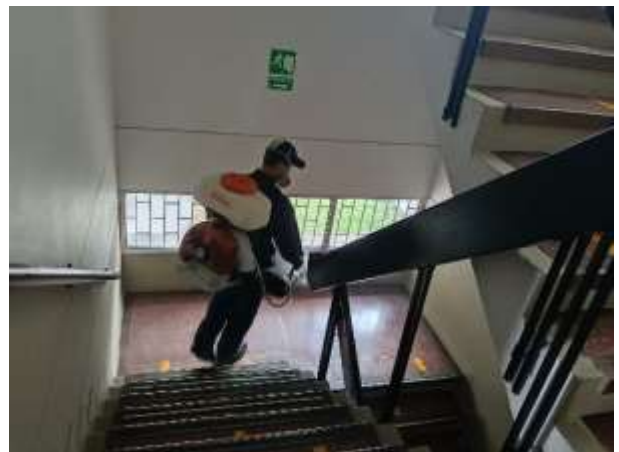




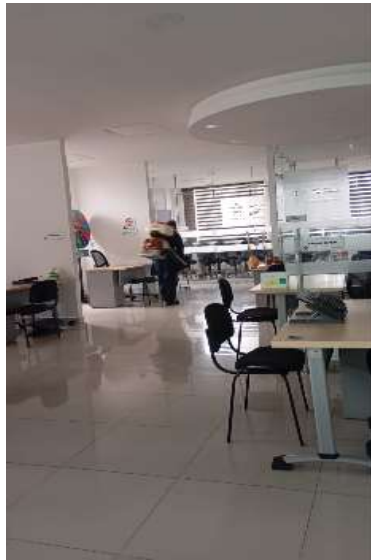
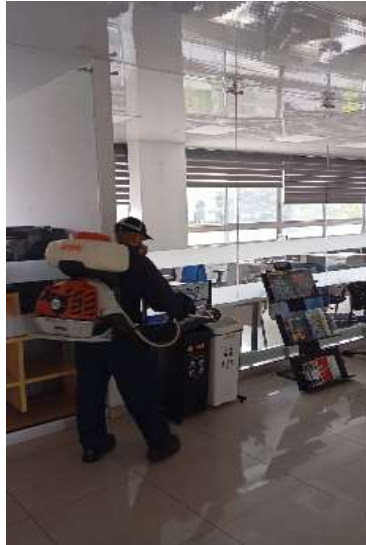


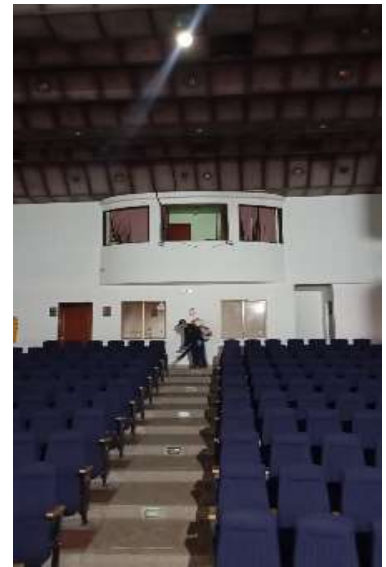




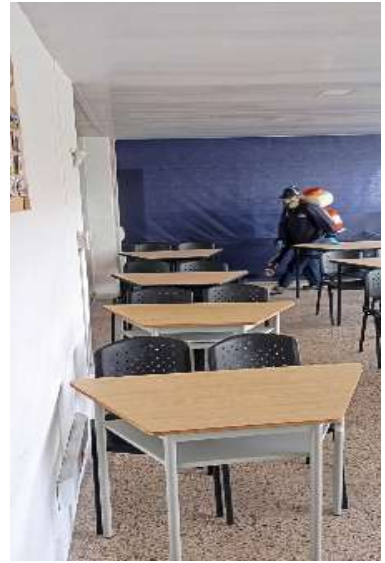








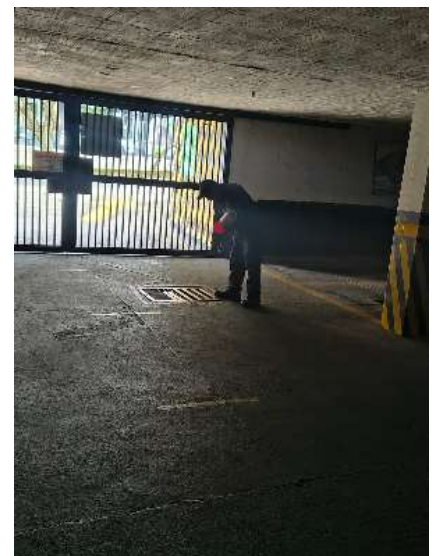
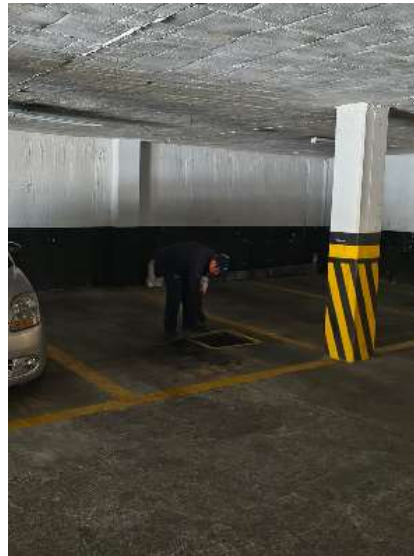
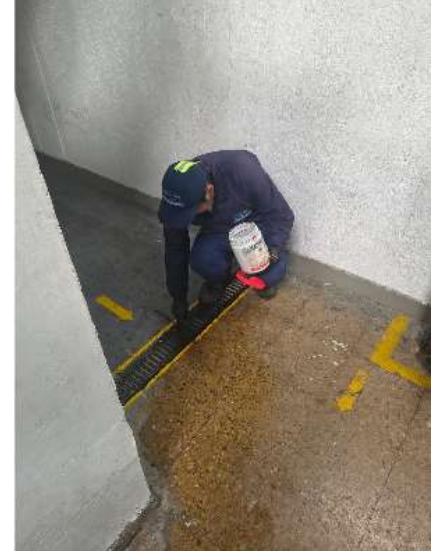


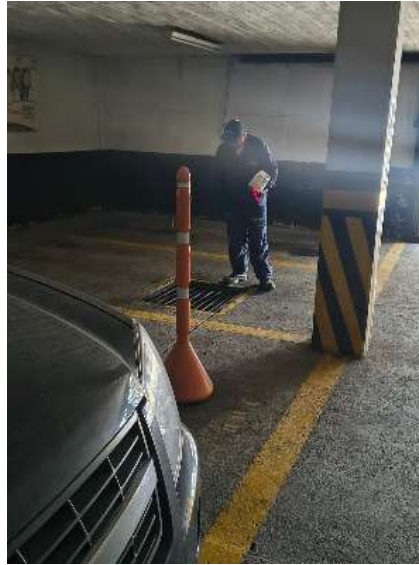




**DES RATIZACION**



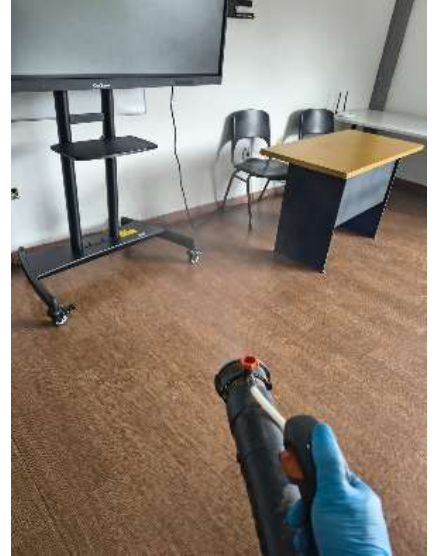
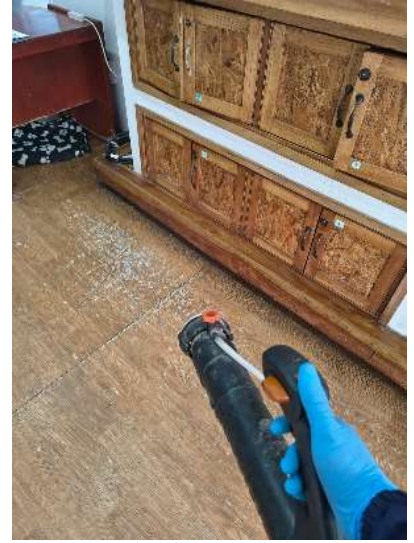


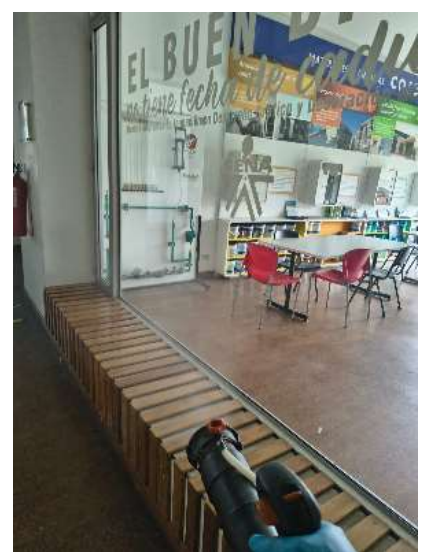


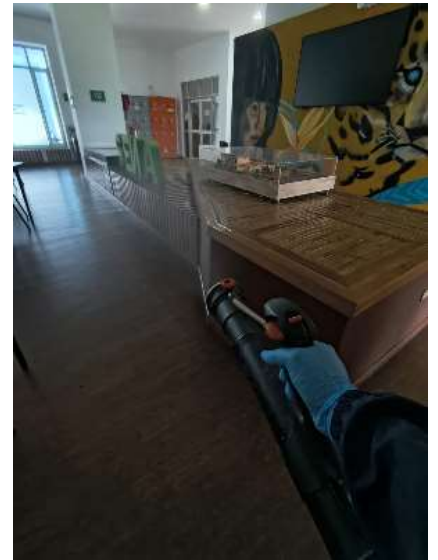
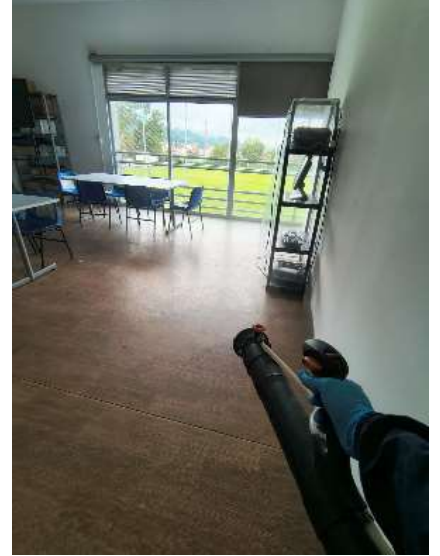
**SENA – CENTRO PARA EL DESARROLLO TECOLOGICO DE LA  
CONSTRUCCION Y LA INDUSTRIA**

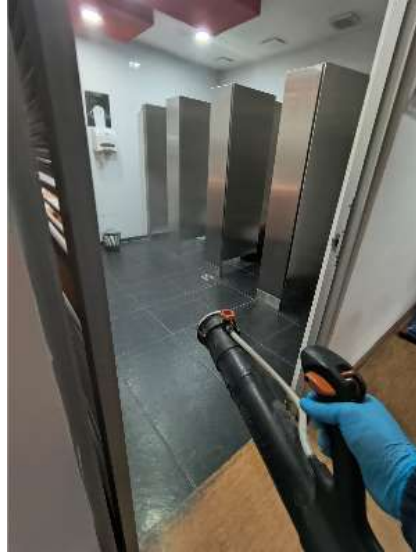
**ASPERSION CON MOTOMOCHILA**

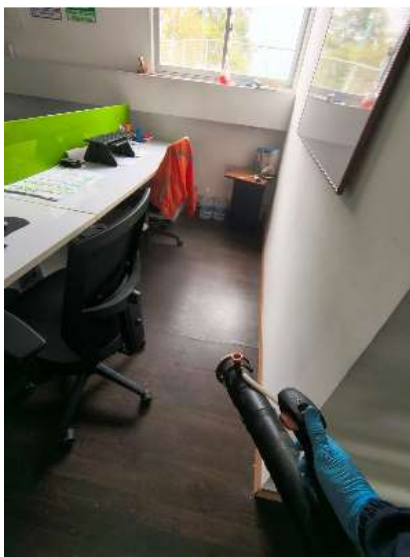
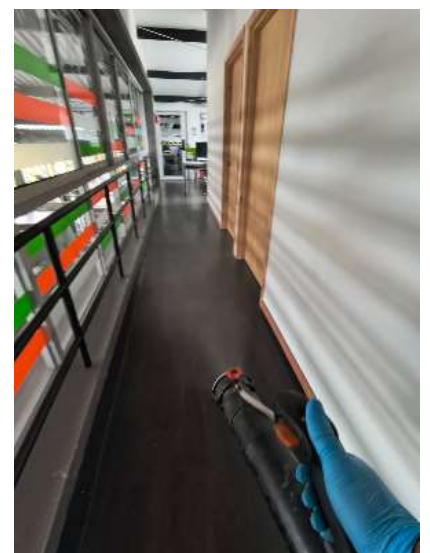
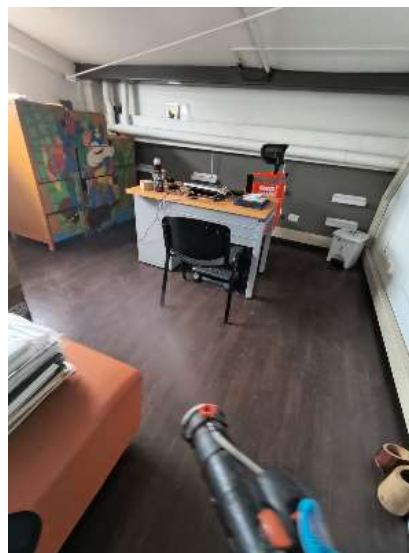
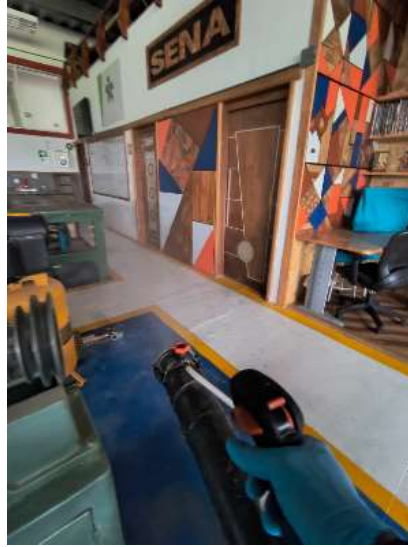










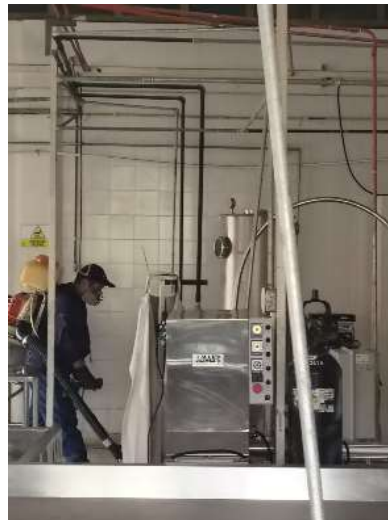
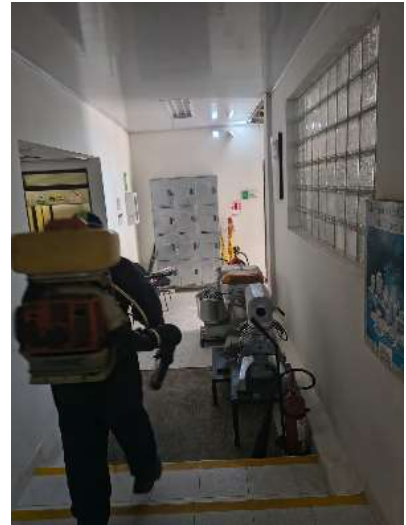




**SENA AGROINDUSTRIAL**  
**ASPERSION CON MOTOMOCHILA**















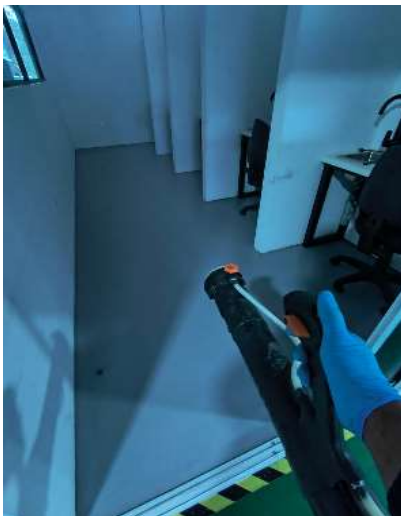
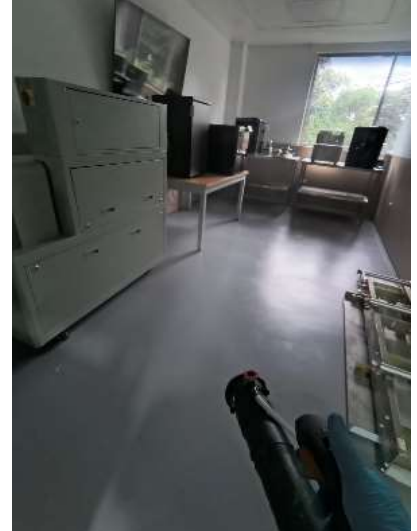
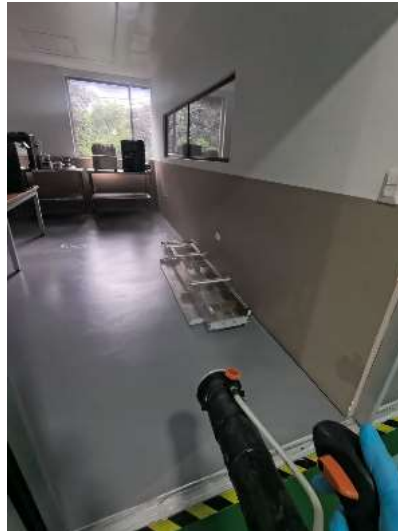
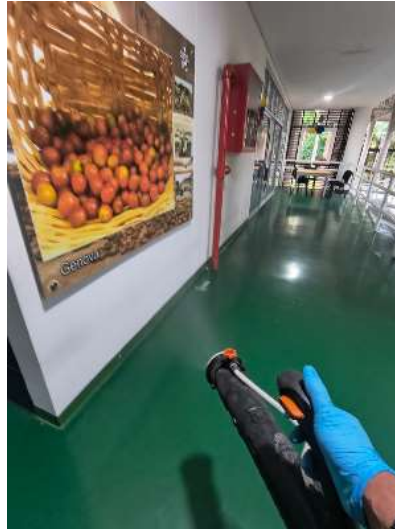
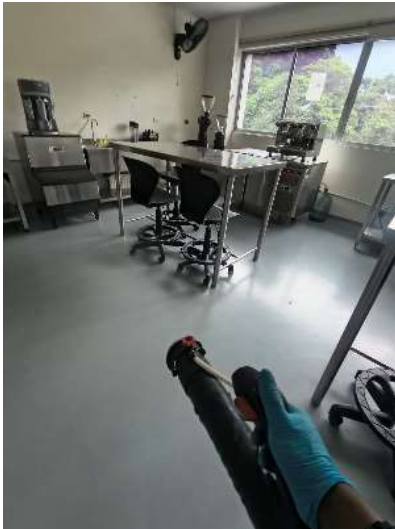
**MONITOREO DE ESTACIONES DE CEBAMIENTO**

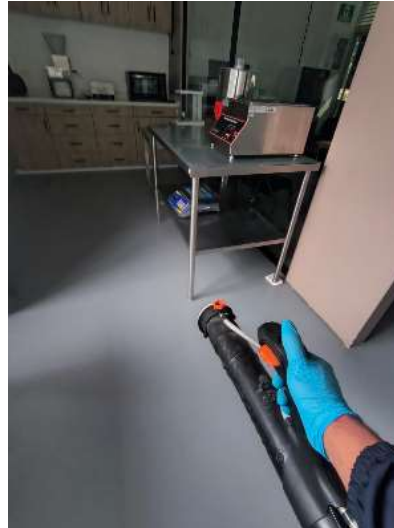
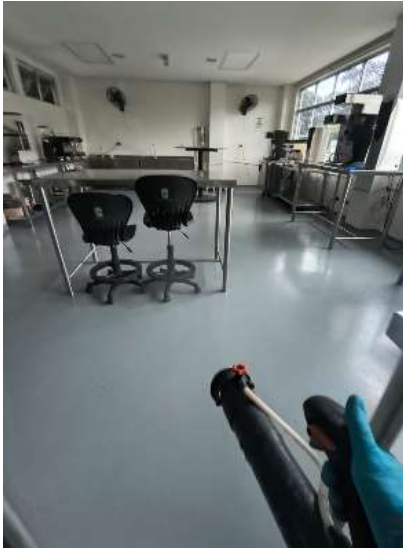


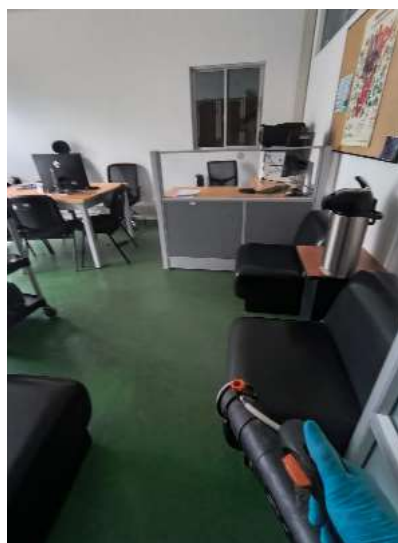
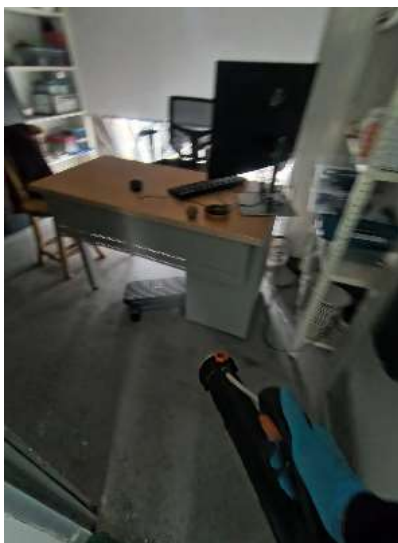
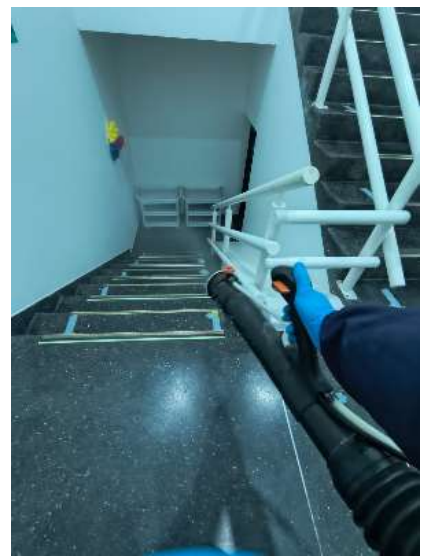


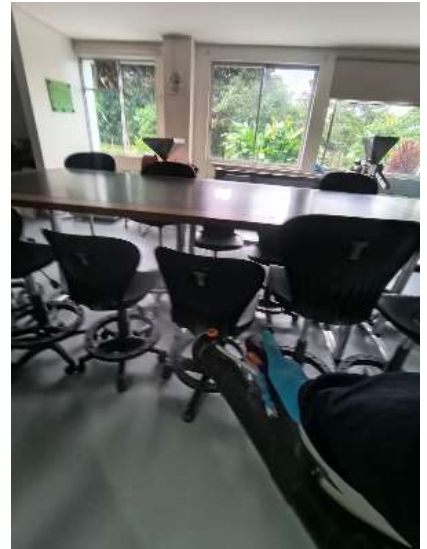
**SENA- ESCUELA DEL CAFÉ**  
**ASPERSION CON MOTOMOCHILA**

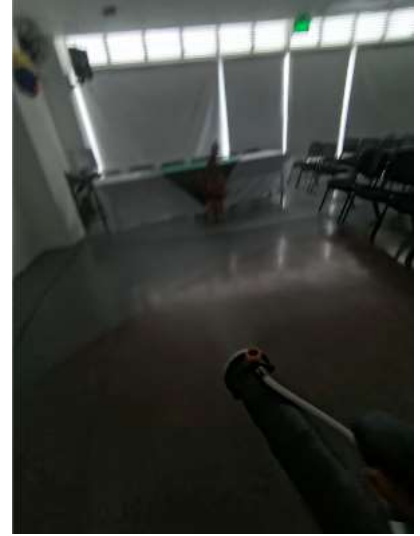


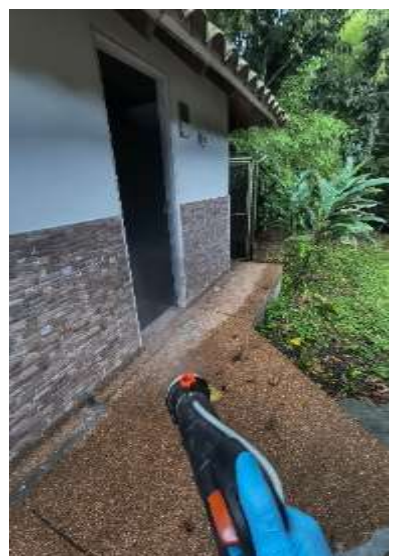














**SENA COMERCIO Y TURISMO**  
**ASPERSION CON MOTOMOCHILA**

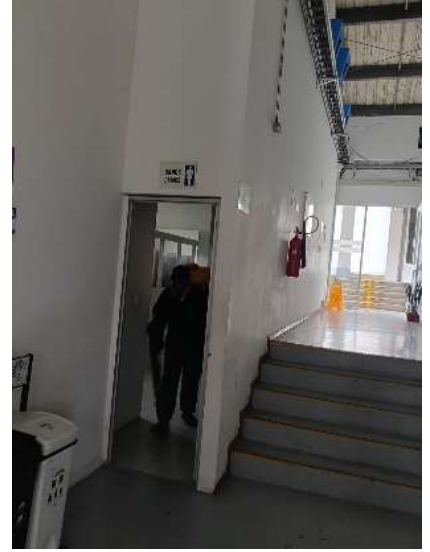






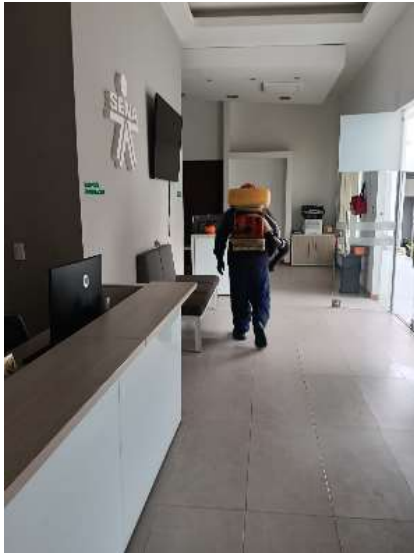


























**DES RATIZACION**





**GASTRONOMIA**  
**ASPERSION CON MOTOMOCHILA**







## TALLERES

### ASPERSION CON MOTOMOCHILA







**SENA AGROINDUSTRIAL - OFICINAS DIRECCIÓN REGIONAL**

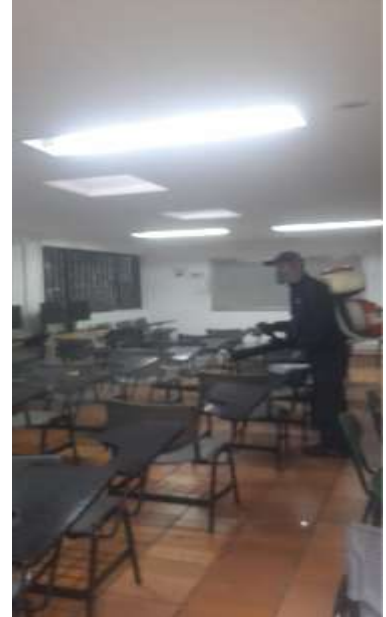
**ASPERSION CON MOTOMOCHILA**







**DANZAS, AMBIENTES y BENEFICIADERO**  
**ASPERSION CON MOTOMOCHILA**





**COLISEO**  
**ASPERSION CON MOTOMOCHILA**

